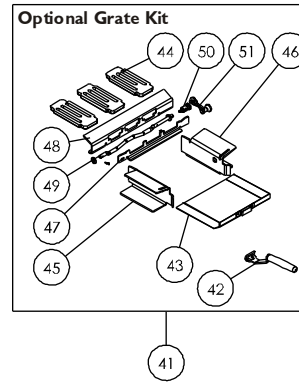
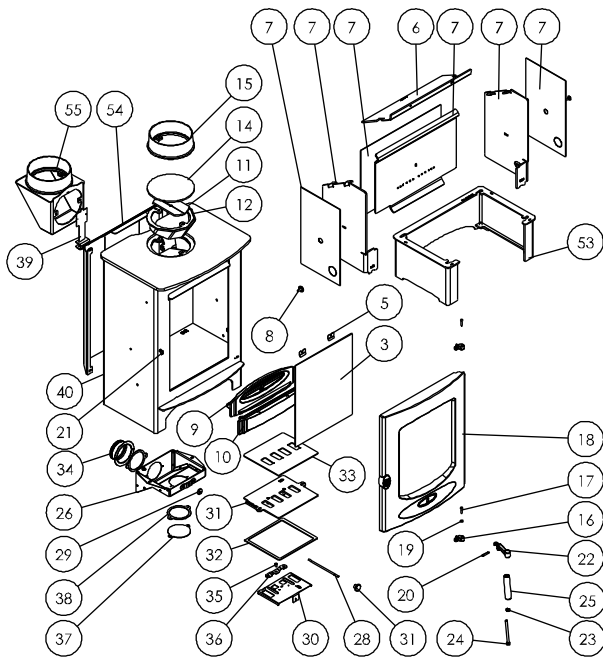




**Issue H**



Item	Part No.	Description	Ex.Vat.	Inc.Vat.	Item	Part No.	Description	Ex.Vat.	Inc.Vat.
1*	008/DR038	Rope Door Seal (10mm Dia) .....	16.00	19.20	28	008/AY37	Air Control Knob .....	5.25	6.30
1a*	008/DR039	Rope Door Seal (18mm Dia) .....	16.00	19.20	29	008/BR052	Felt Washer .....	1.24	1.49
2*	008/FW29	Door Seal Adhesive .....	7.50	9.00	30	004/DR007	Air Inlet Slide .....	14.20	17.04
3	006/DR019	Glass (Inc Seal) .....	57.00	68.40	31	010/CR005	Air Control Plate .....	62.00	74.40
4*	008/DR091	Glass Seal .....	25.00	30.00	32	008/BR045	Air Box Gasket .....	11.50	13.80
5	004/KV23	Glass Retainer .....	0.76	0.91	33	008/CR006	Airbox Gasket (Upper) .....	11.50	13.80
6	010/DR031	Throat Plate .....	81.00	97.20	34	004/CR048	Air Inlet Spigot .....	NA	
7	010/DR058S	Inner Plate Set .....	75.00	90.00	35	008/ES36/01	Brass Ball Catch .....	4.95	5.94
8	004/DY22	Riddler Blanking Disk .....	5.05	6.06	36	004/BR015	Clicker Retainer Plate .....	3.85	4.62
9	002/BR017	Fuel Retainer .....	56.00	67.20	37	004/CR064	Coverplate .....	10.70	12.84
10	002/BR034	Wood Ash Retainer .....	44.00	52.80	38	008/CR063	Duct Gasket .....	5.25	6.30
11	010/AY51	Clamping Plate .....	21.00	25.20	39	012/DR011	Serial No. Label		
12	010/CR070	Flue Collar Deflector			40#	001/DR010	Firebox		
13*	008/NV38	Flue Fixing Rope Seal			41	010/DR022	Grate Kit (Inc Handle) .....	225.00	270.00
14	012/TW09	Blanking Plate .....	26.50	31.80	42	012/BV20/A	Ashpan Tool .....	29.50	35.40
15#	002/CH12B	Flue Collar .....	79.00	94.80	43	004/BR033	Ashpan .....	43.50	52.20
16	002/BR020	Hinge .....	12.80	15.36	44	002/EY03	Grate Plate .....	37.50	45.00
17	008/BW39/S	Hinge Pin Set .....	4.15	4.98	45	010/DR043	L.H. Grate Support .....	30.00	36.00
18#	002/DR001/A	Door Assembly			46	010/DR042	R.H. Grate Support .....	30.00	36.00
19	008/FFW026	1/4 Heavy Brass Washer .....	0.15	0.18	47	010/CR065	Front Grate Support .....	36.00	43.20
20	004/BR014	Handle Pivot Pin .....	5.70	6.84	48	010/DR061	Rear Grate Support .....	30.00	36.00
21	002/PV13	Door Latch .....	9.65	11.58	49	010/DR060	Riddler Rod .....	38.50	46.20
22	002/BR012	Handle Casting .....	23.50	28.20	50	002/DY21	Riddler Knob .....	24.00	28.80
23	008/FFW015	Spring Washer (Thackery Type) .....	2.40	2.88	51	008/DY27	Riddling Tool .....	15.50	18.60
24	008/FFB007	M8 x 100mm Allen Head Bolt .....	0.50	0.60	52*	010/EW51	Ash Carrier (Optional Extra) .....	132.00	158.40
25	008/BR013	Wooden Handle .....	14.50	17.40	53#	010/DR050	Store Stand (Optional Extra) .....	180.00	216.00
26	004/CR041	Airbox Cover .....	45.50	54.60	54	010/DR057	Heat Shield (Optional Extra) .....	NA	
27	004/BR016	Control Rod .....	19.50	23.40	55#	010/TW33	Vert Rear Flue Adaptor (Opt'l Extra) ...	132.00	158.40

\* These items are not shown on the drawing.

# Please specify colour when ordering. Prices are shown in pounds sterling with vat at 20% They are correct at the date shown but may be subject to change without notice. E. & O.E These prices are subject to a carriage charge.

To obtain spare parts please contact your local stockist giving Model, Part No. and Description. In case of difficulty contact the manufacturer at the address shown. This drawing is for identification purposes only.

