

BASIC INFORMATION ABOUT THE PRODUCT

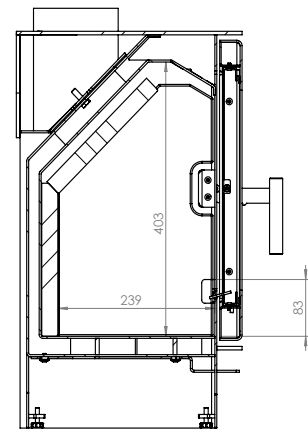
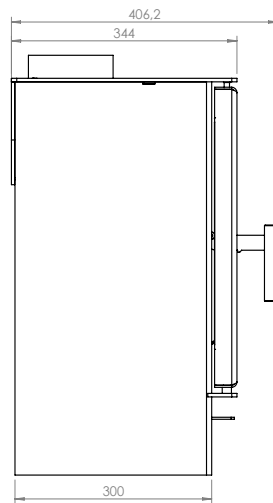
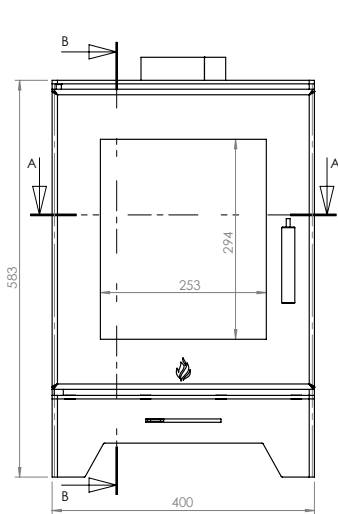


- Modern, compact free standing fireplace, ideal as an additional source of heat and decoration.
- Possibility of installation in open spaces.
- High wood burning efficiency, offering profitability and eco-friendliness.
- Covered with high-temperature paint for protection and aesthetics.
- Air curtain at the windscreen and secondary air vents on the rear wall.
- Three-stage aeration and two dampers to regulate the air supply.
- Movable cast iron grate with ash pan for easy ash removal.
- External cold air intake for compatibility with mechanical ventilation.
- Decorated DECOR fireplace ceramics and polished fireplace glass with an air curtain resistant to 800°C.

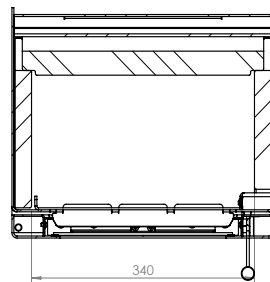
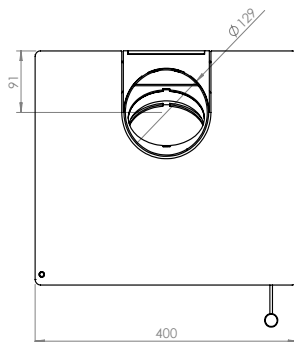
|                                 |           |
|---------------------------------|-----------|
| Nominal power [kW]              | 5,4       |
| Heating load range [kW]         | 2,5 - 7   |
| Thermal efficiency [%]          | 85        |
| CO emissions (at 13% O2) [g/m3] | 0,020     |
| Pollen emission [g/m3]          | 1,216     |
| Average fuel consumption [kg/h] | 1,7       |
| Glass dimensions [mm]           | 338 x 273 |
| Flue diameter [mm]              | 129       |
| Weight [kg]                     | 63        |
| Efficiency factor               | 114,3     |



**GATTO SE**



PRZEKRÓJ B-B  
SKALA 1 : 7



PRZEKRÓJ A-A  
SKALA 1 : 7

**Gatto SE**  
**Masa: 63kg**

# GATTO SE